



PRODUCT CATALOGUE

Compressed Air Distribution (Piping) Products Range



Contacts:

At Pilot Air we're here to help. For your full "Expertise, Support, Value" feel free to call us or drop us a line.

Email:

- sales@pilotair.com.au
- service@pilotair.com.au
- acpayable@pilotair.com.au

Phone:

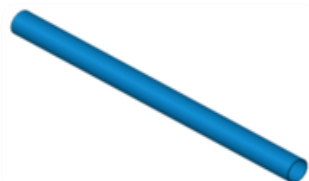
- NSW – 02 9648 3099
- QLD – 07 3279 1213
- VIC/TAS/NT – 1300 667 579
- SA – 1300 667 579 (Statewide Agencies)
- WA- 08 9424 2800 (Air & Power)

Post:

- P O Box 277 Ermington NSW 1700

www.pilotair.com.au

BLUE ALUMINIUM PIPE



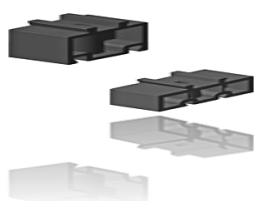
DESCRIPTION	DIA.	PILOT PART NUMBER
Blue Aluminium Pipe D 20 X 1,3 X 6000	20	AC-PIPE-20
Blue Aluminium Pipe D 25 X 1,4 X 6000	25	AC-PIPE-25
Blue Aluminium Pipe D 32 X 1,5 X 6000	32	AC-PIPE-32
Blue Aluminium Pipe D 40 X 1,8 X 6000	40	AC-PIPE-40
Blue Aluminium Pipe D 50 X 2 X 6000	50	AC-PIPE-50
Blue Aluminium Pipe D 63 X 2 X 6000	63	AC-PIPE-63
Blue Aluminium Pipe D 80 X 2,5 X 6000	80	AC-PIPE-80
Blue Aluminium Pipe D 110 X 2,6 X 6000	110	AC-PIPE-110

BRACKETS WITH M8 THREAD



DESCRIPTION	DIA.	PILOT PART NUMBER
Brackets, with M8 thread insert piece (Pack of 10)	16	AC-BRACKETS-16
Brackets, with M8 thread insert piece (Pack of 10)	20	AC-BRACKETS-20
Brackets, with M8 thread insert piece (Pack of 10)	25	AC-BRACKETS-25
Brackets, with M8 thread insert piece (Pack of 10)	32	AC-BRACKETS-32
Brackets, with M8 thread insert piece (Pack of 10)	40	AC-BRACKETS-40
Brackets, with M8 thread insert piece (Pack of 10)	50	AC-BRACKETS-50
Brackets, with M8 thread insert piece (Pack of 10)	63	AC-BRACKETS-63
Brackets, with M8 thread insert piece (Pack of 10)	80	AC-BRACKETS-80
Brackets, with M8 thread insert piece (Pack of 10)	110	AC-BRACKETS-110

SPACERS



DESCRIPTION	DIA.	PILOT PART NUMBER
Spacers (Pack of 10)	20-32	AC-SPACERS-20-32
Spacers (Pack of 10)	40-63	AC-SPACERS-40-63

COUPLING (TECHNOPOLYMER)



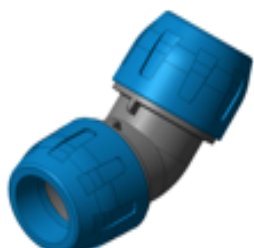
DESCRIPTION	DIA.	PILOT PART NUMBER
Coupling	16	AC-COUP-16
Coupling	20	AC-COUP-20
Coupling	25	AC-COUP-25
Coupling	32	AC-COUP-32
Coupling	40	AC-COUP-40
Coupling	50	AC-COUP-50
Coupling	63	AC-COUP-63

SLIDING COUPLING (TECHNOPOLYMER)



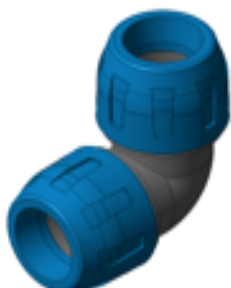
DESCRIPTION	DIA.	PILOT PART NUMBER
Sliding Coupling	32	AC-SL.COUP-32
Sliding Coupling	40	AC-SL.COUP-40
Sliding Coupling	50	AC-SL.COUP-50
Sliding Coupling	63	AC-SL.COUP-63

45° ELBOW (TECHNOPOLYMER)



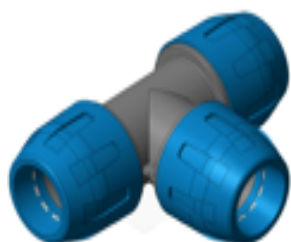
DESCRIPTION	DIA.	PILOT PART NUMBER
45° Elbow	20	AC-45ELB-20
45° Elbow	25	AC-45ELB-25
45° Elbow	32	AC-45ELB-32
45° Elbow	40	AC-45ELB-40
45° Elbow	50	AC-45ELB-50
45° Elbow	63	AC-45ELB-63

90° ELBOW (TECHNOPOLYMER)



DESCRIPTION	DIA.	PILOT PART NUMBER
90° Elbow	16	AC-90ELB-16
90° Elbow	20	AC-90ELB-20
90° Elbow	25	AC-90ELB-25
90° Elbow	32	AC-90ELB-32
90° Elbow	40	AC-90ELB-40
90° Elbow	50	AC-90ELB-50
90° Elbow	63	AC-90ELB-63

TEE (TECHNOPOLYMER)



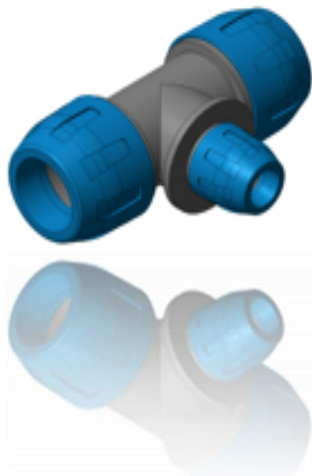
DESCRIPTION	DIA.	PILOT PART NUMBER
Tee	16	AC-TEE-16
Tee	20	AC-TEE-20
Tee	25	AC-TEE-25
Tee	32	AC-TEE-32
Tee	40	AC-TEE-40
Tee	50	AC-TEE-50
Tee	63	AC-TEE-63

THREADED TEE (TECHNOPOLYMER)



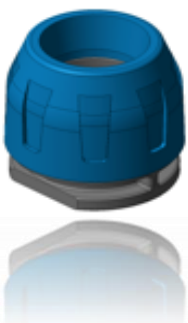
DESCRIPTION	DIA.	PILOT PART NUMBER
Threaded tee, female thread	20	AC-TTF-20
Threaded tee, female thread	25	AC-TTF-25

REDUCING TEE (TECHNOPOLYMER)



DESCRIPTION	DIA.	PILOT PART NUMBER
Reducing Tee	20X16	AC-RED TEE-20X16
Reducing Tee	25X16	AC-RED TEE-25X16
Reducing Tee	25X20	AC-RED TEE-25X20
Reducing Tee	32X20	AC-RED TEE-32X20
Reducing Tee	32X25	AC-RED TEE-32X25
Reducing Tee	40X25	AC-RED TEE-40X25
Reducing Tee	40X32	AC-RED TEE-40X32
Reducing Tee	50X32	AC-RED TEE-50X32
Reducing Tee	50X40	AC-RED TEE-50X40
Reducing Tee	63X40	AC-RED TEE-63X40
Reducing Tee	63X50	AC-RED TEE-63X50

END CAP (TECHNOPOLYMER)



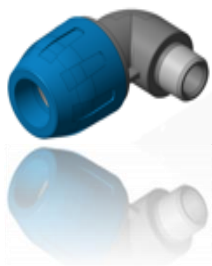
DESCRIPTION	DIA.	PILOT PART NUMBER
End Cap	16	AC-END CUP-16
End Cap	20	AC-END CUP-20
End Cap	25	AC-END CUP-25
End Cap	32	AC-END CUP-32
End Cap	40	AC-END CUP-40
End Cap	50	AC-END CUP-50
End Cap	63	AC-END CUP-63

REDUCERS (TECHNOPOLYMER)



DESCRIPTION	DIA.	PILOT PART NUMBER
Reducers	25X20	AC-REDUCTION-25X20
Reducers	32X25	AC-REDUCTION-32X25
Reducers	40X25	AC-REDUCTION-40X25
Reducers	40X32	AC-REDUCTION-40X32
Reducers	50X40	AC-REDUCTION-50X40

90° ELBOW MALE THREAD (TECHNOPOLYMER)



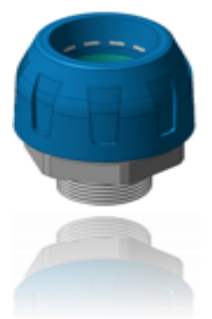
DESCRIPTION	DIA.	PILOT PART NUMBER
90° Elbow, male thread	20x1/2"	AC-90ELB.MALE-20x1/2"
90° Elbow, male thread	25x1/2"	AC-90ELB.MALE-25x1/2"
90° Elbow, male thread	25x3/4"	AC-90ELB.MALE-25x3/4"

UNION (TECHNOPOLYMER)



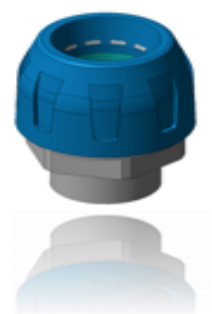
DESCRIPTION	DIA.	PILOT PART NUMBER
Union, male threaded	16X1/2"	AC-UNI-16X1/2"
Union, male threaded	20X1/2"	AC-UNI-20X1/2"
Union, male threaded	20X3/4"	AC-UNI-20X3/4"
Union, male threaded	25X1/2"	AC-UNI-25X1/2"
Union, male threaded	25X3/4"	AC-UNI-25X3/4"
Union, male threaded	25X1"	AC-UNI-25X1"
Union, male threaded	32X1"	AC-UNI-32X1"
Union, male threaded	32X1.1/4"	AC-UNI-32X1.1/4"
Union, male threaded	40X1"	AC-UNI-40X1"
Union, male threaded	40X1.1/4"	AC-UNI-40X1.1/4"
Union, male threaded	40X1.1/2"	AC-UNI-40X1.1/2"
Union, male threaded	50X1.1/2"	AC-UNI-50X1.1/2"
Union, male threaded	50X2"	AC-UNI-50X2"
Union, male threaded	63X2"	AC-UNI-63X2"

NIPPLE SOCKET - MALE THREAD (TECHNOPOLYMER)

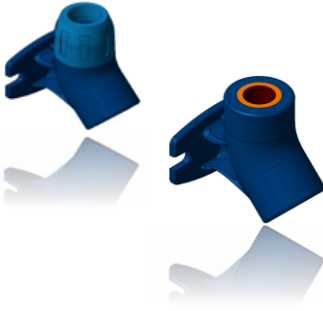


DESCRIPTION	DIA.	PILOT PART NUMBER
Nipple socket, aluminium body, male threaded	20X1/2"	ACM5-20X1/2"
Nipple socket, aluminium body, male threaded	20X3/4"	ACM5-20X3/4"
Nipple socket, aluminium body, male threaded	25X1"	ACM5-25X1"
Nipple socket, aluminium body, male threaded	32X1.1/4"	ACM5-32X1.1/4"
Nipple socket, aluminium body, male threaded	50X2"	ACM5-50X2"

NIPPLE SOCKET - FEMALE THREAD (TECHNOPOLYMER)



DESCRIPTION	DIA.	PILOT PART NUMBER
Nipple socket, aluminium body, female threaded	20X1/2"	ACF5-20X1/2"
Nipple socket, aluminium body, female threaded	20X3/4"	ACF5-20X3/4"
Nipple socket, aluminium body, female threaded	25X1"	ACF5-25X1"
Nipple socket, aluminium body, female threaded	32X1.1/4"	ACF5-32X1.1/4"
Nipple socket, aluminium body, female threaded	50X2"	ACF5-50X2"



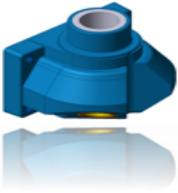
SINGLE PORT MANIFOLD (TECHNOPOLYMER)

DESCRIPTION	DIA.	PILOT PART NUMBER
Single port manifold, female thread D.16x1/2"	16	ACM1P-16
Single port manifold, female thread D.20x1/2"	20	ACM1P-20
Single port manifold, female thread + threaded insert D. 1/2"x1/2"	1/2"x1/2"	ACMFF1P-1/2"x1/2"



DOUBLE PORT MANIFOLD (TECHNOPOLYMER)

DESCRIPTION	DIA.	PILOT PART NUMBER
Double port manifold, female threads D.16x1/2"	16x1/2"	ACM2P-16x1/2"
Double port manifold, female threads D.20x1/2"	20x1/2"	ACM2P-20x1/2"
Double port manifold, female threads D.25x1/2"	25x1/2"	ACM2P-25x1/2"



DOUBLE PORT MANIFOLD (TECHNOPOLYMER)

DESCRIPTION	DIA.	PILOT PART NUMBER
Double port manifold, female threads + threaded insert D. 1/2" x 1/2"	1/2"x1/2"	ACMFF2P-1/2"x1/2"
Double port manifold, female threads + threaded insert D. 3/4" x 1/2"	3/4"x1/2"	ACMFF2P-3/4"x1/2"



MULTIPLE MANIFOLD (TECHNOPOLYMER)

DESCRIPTION	DIA.	PILOT PART NUMBER
Multiple manifold, threaded inlet + 10 threaded outlets 1/2"x1/4"x3/8"	1/2X1/4"x3/8"	ACMFF10P-1/2X1/4"x3/8"



COUPLING (ALUMINIUM)

DESCRIPTION	DIA.	PILOT PART NUMBER
Coupling	40	AC-COUP.ALU-40
Coupling	63	AC-COUP.ALU-63
Coupling	80	AC-COUP.ALU-80
Coupling	110	AC-COUP.ALU-110



SLIDING COUPLING (ALUMINIUM)

DESCRIPTION	DIA.	PILOT PART NUMBER
Sliding Coupling	40	AC-SL.COUP.ALU-40
Sliding Coupling	63	AC-SL.COUP.ALU-63
Sliding Coupling	80	AC-SL.COUP.ALU-80

90° ELBOW MALE THREAD (ALUMINIUM)



DESCRIPTION	DIA.	PILOT PART NUMBER
90° Elbow	40	AC-90ELBOW.ALU-40
90° Elbow	63	AC-90ELBOW.ALU-63
90° Elbow	80	AC-90ELBOW.ALU-80
90° Elbow	110	AC-90ELBOW.ALU-110

END CAP



DESCRIPTION	DIA.	PILOT PART NUMBER
End Cap	40	AC-END.CUP.ALU-40
End Cap	63	AC-END.CUP.ALU-63
End Cap	80	AC-END.CUP.ALU-80

TEE (ALUMINIUM)



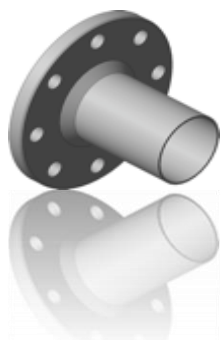
DESCRIPTION	DIA.	PILOT PART NUMBER
Tee	40	AC-TEE.ALU-40
Tee	63	AC-TEE.ALU-63
Tee	80	AC-TEE.ALU-80
Tee	110	AC-TEE.ALU-110

THREADED TEE (ALUMINIUM)



DESCRIPTION	DIA.	PILOT PART NUMBER
Threaded tee, female thread D 40X1.1/4"	40X1.1/4"	AC-TTF-40X1.1/4"
Threaded tee, female thread D 63X2"	63X2"	AC-TTF-63X2"
Threaded tee, female thread D 80X2.1/2"	80X2,1/2"	AC-TTF-80X2,1/2"
Threaded tee, female thread D 110	110X3"	AC-TTF-110X3"

FLANGED TIP



DESCRIPTION	DIA.	PILOT PART NUMBER
Flanged Tip 80x3" DIN	80x3"	AC-FLA.DIN-80x3"
Flanged Tip 110x4" DIN	110x4"	AC-FLA.DIN-110x4"
Flanged Tip 80x3" ANSI	80x3"	AC-FLA.ANSI-80x3"
Flanged Tip 110x4" ANSI	110x4"	AC-FLA.ANSI.110x4"

NIPPLE SOCKET - MALE THREAD (ALUMINIUM)



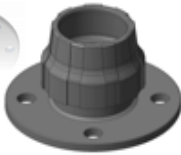
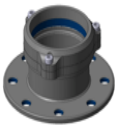
DESCRIPTION	DIA.	PILOT PART NUMBER
Nipple socket, male threaded D.40x1.1/2"	40X1.1/2"	AC-NIP.M-40X1.1/2"
Nipple socket, male threaded D.63x2.1/2"	63X2"	AC-NIP.M-63X2"
Nipple socket, male threaded D.63x2.1/2"	63X2.1/2"	AC-NIP.M-63X2.1/2"
Nipple socket, male threaded D.80x2.1/2"	80X2.1/2"	AC-NIP.M-80X2.1/2"
Nipple socket, male threaded D.80x3"	80X3"	AC-NIP.M-80X3"

NIPPLE SOCKET - FEMALE THREAD (ALUMINIUM)



DESCRIPTION	DIA.	PILOT PART NUMBER
Nipple socket, female threaded D.40x1.1/2"	40X1.1/2"	AC-NIP.F-40X1.1/2"
Nipple socket, female threaded D.63x2.1/2"	63X2.1/2"	AC-NIP.F-63X2.1/2"

FLANGED COUPLING (ALUMINIUM)



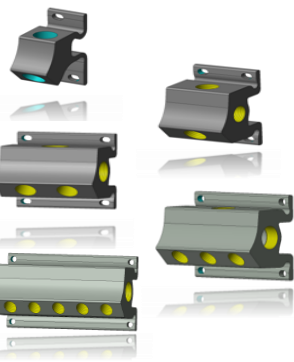
DESCRIPTION	DIA.	PILOT PART NUMBER
Flanged Coupling D.63x2"	63X2"	AC-FL.COUP-63X2"
Flanged Coupling D.80x3"	80X3"	AC-FL.COUP-80X3"
Flanged Coupling D.110x4"	110X4"	AC-FL.COUP-110X4"
Flanged Coupling D.63x2"	63X2"	AC-FL.COUP.ANSI-63X2"
Flanged Coupling D.80x3"	80X3"	AC-FL.COUP.ANSI-80X3"
Flanged Coupling D.110x4"	110X4"	AC-FL.COUP.ANSI-110X4"

REDUCTION PIPE MALE (ALUMINIUM)



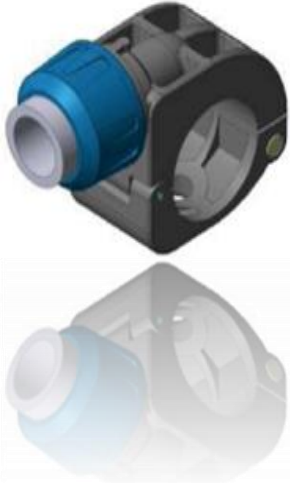
DESCRIPTION	DIA.	PILOT PART NUMBER
Reduction pipe, male/male connection 110x63	110x63	AC-RED.PIPE-110x63
Reduction pipe, male/male connection 110x80	110x80	AC-RED.PIPE-110x80

PORT MANIFOLDS FEMALE THREAD (ALUMINIUM)



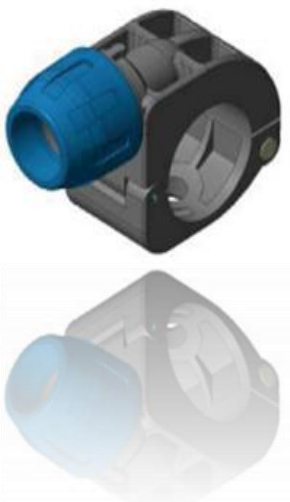
DESCRIPTION	DIA.	PILOT PART NUMBER
Single port manifold, female threads	1/2"x1/2"	ACM1P-1/2"x1/2"
Three port manifold, female threads + drain 1/4" (blind)	1/2"x1/2"x1/2"	ACM3P-1/2"x1/2"x1/2"
Four port manifold, female threads + drain 1/4" (blind)	1/2"x1/2"x1/2"	ACM4P-1/2"x1/2"x1/2"
Four port manifold, female threads + drain 1/4" (blind)	3/4"x3/4"x1/2"	ACM4P-3/4"x3/4"x1/2"
Five port manifold, female threads + drain 1/4" (blind)	3/4"x3/4"x1/2"	ACM5P-3/4"x3/4"x1/2"
Seven port manifold, female threads + drain 1/4" (blind)	3/4"x3/4"x1/2"	ACM7P-3/4"x3/4"x1/2"

QUICK BRANCH PLUGS (ALUMINIUM - BSP OUTLET)



DESCRIPTION	DIA.	PILOT PART NUMBER
Quick branch plugs, female threaded outlet (aluminium)	25x1/2"	AC-PLUGS.ALU-25x1/2"
Quick branch plugs, female threaded outlet (aluminium)	32x1/2"	AC-PLUGS.ALU-32x1/2"
Quick branch plugs, female threaded outlet (aluminium)	40x1/2"	AC-PLUGS.ALU-40x1/2"
Quick branch plugs, female threaded outlet (aluminium)	40x3/4"	AC-PLUGS.ALU-40x3/4"
Quick branch plugs, female threaded outlet (aluminium)	50x1/2"	AC-PLUGS.ALU-50x1/2"
Quick branch plugs, female threaded outlet (aluminium)	50x3/4"	AC-PLUGS.ALU-50x3/4"
Quick branch plugs, female threaded outlet (aluminium)	63x1/2"	AC-PLUGS.ALU-63x1/2"
Quick branch plugs, female threaded outlet (aluminium)	63x3/4"	AC-PLUGS.ALU-63x3/4"
Quick branch plugs, female threaded outlet (aluminium)	63x1"	AC-PLUGS.ALU-63x1"
Quick branch plugs, female threaded outlet (aluminium)	80x1/2"	AC-PLUGS.ALU-80x1/2"
Quick branch plugs, female threaded outlet (aluminium)	80x3/4"	AC-PLUGS.ALU-80x3/4"
Quick branch plugs, female threaded outlet (aluminium)	80x1"	AC-PLUGS.ALU-80x1"
Quick branch plugs, female threaded outlet (aluminium)	110X3/4"	AC-PLUGS.ALU-110X3/4"
Quick branch plugs, female threaded outlet (aluminium)	110X1"	AC-PLUGS.ALU-110X1"

QUICK BRANCH PLUGS (ALUMINIUM - METRIC OUTLET)



DESCRIPTION	DIA.	PILOT PART NUMBER
Quick branch plug	25X16	AC-PLUG-25X16
Quick branch plug	25X20	AC-PLUG-25X20
Quick branch plug	32X16	AC-PLUG-32X16
Quick branch plug	32X20	AC-PLUG-32X20
Quick branch plug	40X16	AC-PLUG-40X16
Quick branch plug	40X20	AC-PLUG-40X20
Quick branch plug	40X25	AC-PLUG-40X25
Quick branch plug	50X16	AC-PLUG-50X16
Quick branch plug	50X20	AC-PLUG-50X20
Quick branch plug	50X25	AC-PLUG-50X25
Quick branch plug	63X20	AC-PLUG-63X20
Quick branch plug	63X25	AC-PLUG-63X25
Quick branch plug	63X32	AC-PLUG-63X32
Quick branch plug	80X20	AC-PLUG-80X20
Quick branch plug	80X25	AC-PLUG-80X25
Quick branch plug	80X32	AC-PLUG-80X32
Quick branch plug	110x25	AC-PLUG-110x25
Quick branch plug	110x32	AC-PLUG-110x32



CONTROL KIT

DESCRIPTION	DIA.	PILOT PART NUMBER
Control kit for pneumatic valve	-	AC-KITVA

QUICK LINE BALL VALVE

DESCRIPTION	DIA.	PILOT PART NUMBER
Quick Line stainless steel ball valve	40	AC-QL.VALVE-40
Quick Line stainless steel ball valve	63	AC-QL.VALVE-63
Quick Line stainless steel ball valve	80	AC-QL.VALVE-80
Quick Line stainless steel ball valve	110	ACQL.-VALVE-110
Quick Line stainless steel ball valve	110	AC-QL.VALVE.ANSI-110

QUICK LINE BALL VALVE FEMALE THREAD

DESCRIPTION	DIA.	PILOT PART NUMBER
Quick Line stainless steel ball valve, female threaded	40x1.1/2"	AC-QL.VALVE-40x1.1/2"
Quick Line stainless steel ball valve, female threaded	63x2"	AC-VALVE-63x2"
Quick Line stainless steel ball valve, female threaded	80x3"	AC-VALVE-80x3"

QUICK LINE BALL VALVE MALE THREAD

DESCRIPTION	DIA.	PILOT PART NUMBER
Quick Line male threaded connection ball valve	16X1/2"	ACPMBV-16X1/2"
Quick Line male threaded connection ball valve	20X1/2"	ACPMBV-20X1/2"
Quick Line male threaded connection ball valve	25X3/4"	ACPMBV-25X3/4"

QUICK LINE FEMALE THREADED CONNECTION BALL VALVE

DESCRIPTION	DIA.	PILOT PART NUMBER
Quick Line female threaded connection ball valve	16X1/2"	ACPFBV-16X1/2"
Quick Line female threaded connection ball valve	20X1/2"	ACPFBV-20X1/2"
Quick Line female threaded connection ball valve	25X3/4"	ACPFBV-25X3/4"

FLEXIBLE EXPANSION HOSE MALE CONNECTION

DESCRIPTION	DIA.	PILOT PART NUMBER
Flexible expansion compensator hose, male connection	20	AC-HOSE-20
Flexible expansion compensator hose, male connection	25	AC-HOSE-25
Flexible expansion compensator hose, male connection	32	AC-HOSE-32
Flexible expansion compensator hose, male connection	40	AC-HOSE-40
Flexible expansion compensator hose, male connection	50	AC-HOSE-50
Flexible expansion compensator hose, male connection	63	AC-HOSE-63

ANTI WHIP LASH KIT

DESCRIPTION	DIA.	PILOT PART NUMBER
Anti-whiplash kit	-	AC-AW.KIT

QUICK LINE NUT WRENCH

DESCRIPTION	DIA.	PILOT PART NUMBER
Quick Line nut wrench	16-20	AC-WRENCH-16-20
Quick Line nut wrench	25-32	AC-WRENCH-25-32
Quick Line nut wrench	40-50	AC-WRENCH-40-50
Quick Line nut wrench double ended	63	AC-WRENCH-63

QUICK LINE NUT WRENCH

DESCRIPTION	DIA.	PILOT PART NUMBER
Quick Line nut wrench	40	AC-WRENCH-40
Quick Line nut wrench single ended	63	AC-WRENCH.S-63
Quick Line nut wrench	80	AC-WRENCH-80

UNIVERSAL NUT WRENCH

DESCRIPTION	DIA.	PILOT PART NUMBER
Universal nut wrench	universal universale	AC-WRENCH-UNIVERSAL

PIPE FITTING INSERTION METER

DESCRIPTION	DIA.	PILOT PART NUMBER
Pipe-fitting insertion meter D 16-80	16-80	AC-PIPE.FIT-16-18

DEBURRERS & REAMERS

DESCRIPTION	DIA.	PILOT PART NUMBER
Deburrers and reamers	16-50	AC-DEB-16-50
Deburrers and reamers	63-110	AC-DEB-63-110
Toolbox	-	AC-TOOLBOX



BUSH WITH O-RING SEALS



DESCRIPTION	DIA.	PILOT PART NUMBER
Bush with O-Ring seal	16	AC-BOR-16
Bush with O-Ring seal	20	AC-BOR-20
Bush with O-Ring seal	25	AC-BOR-25
Bush with O-Ring seal	32	AC-BOR-32
Bush with O-Ring seal	40	AC-BOR-40
Bush with O-Ring seal	40	AC-BOR.AL-40
Bush with O-Ring seal	50	AC-BOR-50
Bush with O-Ring seal	63	AC-BOR-63
Bush with O-Ring seal	80	AC-BOR-80

VITON O-RING SEALS



DESCRIPTION	DIA.	PILOT PART NUMBER
Viton O-Ring seal	16	AC-VOR-16
Viton O-Ring seal	20	AC-VOR-20
Viton O-Ring seal	25	AC-VOR-25
Viton O-Ring seal	32	AC-VOR-32
Viton O-Ring seal	40	AC-VOR-40
Viton O-Ring seal	40	AC-VOR.AL-40
Viton O-Ring seal	50	AC-VOR-50
Viton O-Ring seal	63	AC-VOR-63
Viton O-Ring seal	80	AC-VOR-80

RING NUT WITH CLAMPING RING

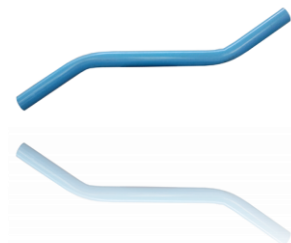


DESCRIPTION	DIA.	PILOT PART NUMBER
Ring nut with stainless steel clamping ring	16	AC-RNUT-16
Ring nut with stainless steel clamping ring	20	AC-RNUT20
Ring nut with stainless steel clamping ring	25	AC-RNUT25
Ring nut with stainless steel clamping ring	32	AC-RNUT32
Ring nut with stainless steel clamping ring	40	AC-RNUT40
Ring nut with stainless steel clamping ring	50	AC-RNUT50
Ring nut with stainless steel clamping ring	63	AC-RNUT63

ALUMINIUM RING NUT WITH CLAMPING RING



DESCRIPTION	DIA.	PILOT PART NUMBER
Aluminium ring nut with stainless steel clamping ring	40	AC-ANUT-40
Aluminium ring nut with stainless steel clamping ring	63	AC-ANUT-63
Aluminium ring nut with stainless steel clamping ring	80	AC-ANUT-80
Aluminium ring nut with stainless steel clamping ring	110	AC-ANUT-110



ALUMINIUM DOUBLE BEND

DESCRIPTION	DIA.	PILOT PART NUMBER
Aluminium double bend D.20	20	AC-PIPEDB-20
Aluminium double bend D.25	25	AC-PIPEDB-25