



650  
ProLine

-  Automatic Gauge
-  Autobrake
-  Pedal Brake **OPT**
-  Electronic width sensor **OPT**



# CORGHI 650 ProLine



ACQUISIZIONE DATI RUOTA (AUTOMATICO)  
WHEEL DIMENSION DETECTION (AUTOMATIC)



STOP AUTOMATICO A FINE CICLO  
AUTOMATIC END-CYCLE STOP



PESO NASCOSTO  
HIDDEN WEIGHT




FRENO A PEDALE  
PEDAL BRAKE



RILEVATORE LARGHEZZA CERCHIO  
ELECTRONIC WIDTH SENSOR




\* CCK = a richiesta/optional


 Equilibratrice display digitale con ciclo completamente automatico con software che opera su tutti i tipi di ruote in acciaio, lega leggera di vetture, fuoristrada e veicoli commerciali leggeri, motocicli e scooter.

 Digital display wheel balancer completely automatic cycle and software compatible with all types of steel and light alloy wheels for passenger cars, off-road vehicles, light commercial vehicles, motorcycles and scooters.


## 1 DISPLAY E PIANALE PORTA PESI / DISPLAY AND WEIGHT HOLDER TRAY




 Display digitale, moderno, pratico e ad elevata luminosità. Pianale portapesi ergonomico e spazioso per contrappesi ed accessori da lavoro realizzato con materiale ad elevata resistenza.

 Modern and practical high brightness digital display. Ergonomic and spacious tray in highly resilient material for counterweights and work accessories.


## 2 ACQUISIZIONE DATI RUOTA / WHEEL DIMENSION ACQUISITION

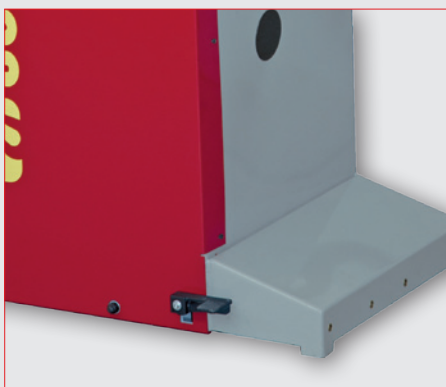
 Dotata di rilevatore interno automatico per la misura della distanza e del diametro cerchio. Integrabile con rilevatore elettronico della larghezza EG1. Disponibile anche nella versione con rilevatore interno manuale.


 With automatic internal measurement sensor for measuring wheel distance and diameter. May also be equipped with EG1 electronic width sensor. Also available as version with manual internal measurement.



## 3 CHASSIS - FRENO A PEDALE DI STAZIONAMENTO (OPTIONAL) / CHASSIS - PEDAL OPERATED HOLD BRAKE (OPTIONAL)

 Chassis solido e stabile per equilibrare ruote fino a 70kg di peso. Il freno a pedale facilita il montaggio della ruota sulla macchina e le fasi di applicazione dei contrappesi.





 Sturdily built and stable chassis for balancing wheels up to 70 kg. Pedal operated hold brake facilitates fitment of wheel on machine and application of counterweights.

## PROGRAMMI SPECIALI / SPECIAL PROGRAMMES





### HIDDEN WEIGHT

 Programma per nascondere il peso dietro le razze per un migliore impatto estetico del cerchio.  
 Programme for concealing counterweights behind spokes for improved wheel aesthetics.



### OPT FLASH

 Programma che indica la posizione di montaggio ideale tra cerchio e pneumatico al fine di ridurre lo squilibrio complessivo della ruota.  
 Programme indicating ideal wheel/tyre assembly position to reduce overall wheel imbalance.

## DATI TECNICI - TECHNICAL DATA

650 DD 650 NO DD	1214 x 541 x 1137 (no cover) 1625 x 1217 x 1280 (with cover)	96 Kg	10" - 26" 1" - 35"	1,5" - 20"	22,8"	1110 mm 43,7"	70 Kg	115/230V 1Ph - 50/60Hz	150÷200 rpm	0,2 kW

### VERSIONI / VERSIONS

- Proline 650 DD - con rilevatore interno automatico distanza-diametro (115V o 230V)
- Proline 650 No DD - con rilevatore interno manuale (115V o 230V)
- Proline 650 DD - with automatic internal distance/diameter measurement (115V or 230V)
- Proline 650 No DD - with manual internal measurement (115V or 230V)

### ACCESSORI STANDARD / STANDARD ACCESSORIES

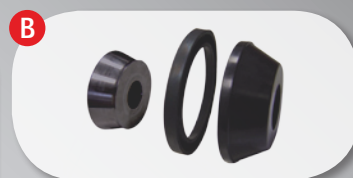


### ACCESSORI RACCOMANDATI RECOMMENDED ACCESSORIES

- A** 8-21100188  
PR44" Carter di protezione e paraspruzzi per ruote fino a 1118 mm di diametro (obbligatorio per conformità CE)  
PR44" Safety cover/splash guard for wheels up to 1118 mm in diameter (mandatory for CE marking compliance)



- B** 8-21100080  
ARF Kit di centraggio per fuoristrada ø 100÷118,5 mm  
ARF Centring kit for off-road wheels, ø 100 to 118.5 mm



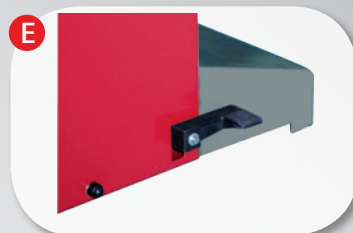
- C** 8-21100141  
DX/CBF Accessorio di centraggio per furgoni e fuoristrada con foro centrale Ø 117÷173 mm  
DX/CBF Centring accessory for van and off-road wheels with central hole with Ø 117÷173 mm



- D** 8-21100074  
EG-1 Rilevatore larghezza cerchio con supporto (solo per versione Proline 650 DD)  
EG-1 Wheel width measurement sensor with mount (for Proline 650 DD version only)



- E** 8-21900004  
Freno a pedale  
Pedal Brake



- F** 8-21100230  
TT-0 Sollevatore effetto "senza peso"  
TT-0 "Weightless effect" wheel lifter



- G** 8-21900005/XX  
CCK Pannello colorato  
CCK Colored panel



Per maggiori informazioni consultare il catalogo accessori / For more information, please consult the accessories catalogue

<http://www.facebook.com/CORGHISpa>



<https://twitter.com/corghispa>



<http://www.youtube.com/CORGHISpa>



CORGHI S.p.A. a NEXION GROUP COMPANY  
Strada Statale 468 n° 9 - 42015 CORREGGIO - R.E. - ITALY  
Tel. ++39 0522 639.111 - Fax ++39 0522 639.150 - [www.corghi.com](http://www.corghi.com) - [info@corghi.com](mailto:info@corghi.com)

